

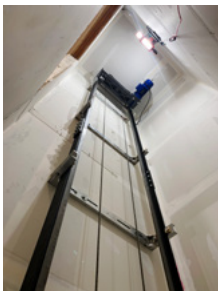
BUILDER RESPONSIBILITIES — WORK TO BE DONE BY OTHERS

ALL ITEMS BELOW MUST BE COMPLETED PRIOR TO SCHEDULING THE ELEVATOR INSTALLATION

Detailed spec sheets for each item listed below can be found in the Southeast Elevator Resource Library



1 RAIL WALL



Block:
Backfill all cells solid from top to bottom at rail stack location.

Wood:
Double stacked 2x12's with 2x4" end caps running the full vertical length of the hoistway (inside the wall).

2 ELECTRICAL REQUIREMENTS



Main Power / Lockable Fusible 240vac 30amp disconnect with neutral and aux contacts.

Cab Lights / Lockable Fusible 120vac 15amp disconnect.

3 SHAFT DOOR



Solid core door. Inset to meet door code.

3/4" rule as specified by: ASME A17.1 - 2016

4 SHAFT DOOR HARDWARE



Recessed door handle with standard latch, or equivalent.

Cannot exceed 3/4" thickness on interior side.

5 SHAFT DOOR NOTCH



2 1/2" x 11" Notch cut in the door for the interlock.

| Door height | Cut height from bottom of door |
|-------------|--------------------------------|
| 80" - 84" | 67" |
| 86" - 108" | 73" |

6 PERMANENT POWER



7 ACTIVE PHONE LINE TO CONTROLLER



Select any of the following to fulfill the requirements:

- Mylinkline cellular modem w/ battery backup (preferred)
- Ooma Telo LTE cellular modem w/ battery backup (alternate)
- Analog Landline