

House Prep for a Future Elevator

When designing your plans for the construction of a new home, there are numerous things you can include in advance to enable Southeast Elevator to easily install a residential elevator in the future. This will be most practical and beneficial to the homeowner as it will keep them from having to make major changes or additions to their home.

HOISTWAY

Stacked closets on all levels of the home are the way to go when designing a new home with the potential for a future Southeast Elevator installation. 25 sq. ft. of available floor space in an unblocked area of the home is enough for a residential elevator.

PIT

Optimally provide a 12" pit. The absolute minimum depth is 8".

RAIL WALL

For wood framed rail wall, do not run any lines or plumbing in the rail wall. For concrete block rail wall, if block, fill all cells solid, top to bottom. Refer to Rail Bracket Details spec sheet.

MACHINE ROOM

Run two 2" PVC pipes with sweeping 90's for ease of pulling through from the shaft to the machine room.

ELECTRICAL

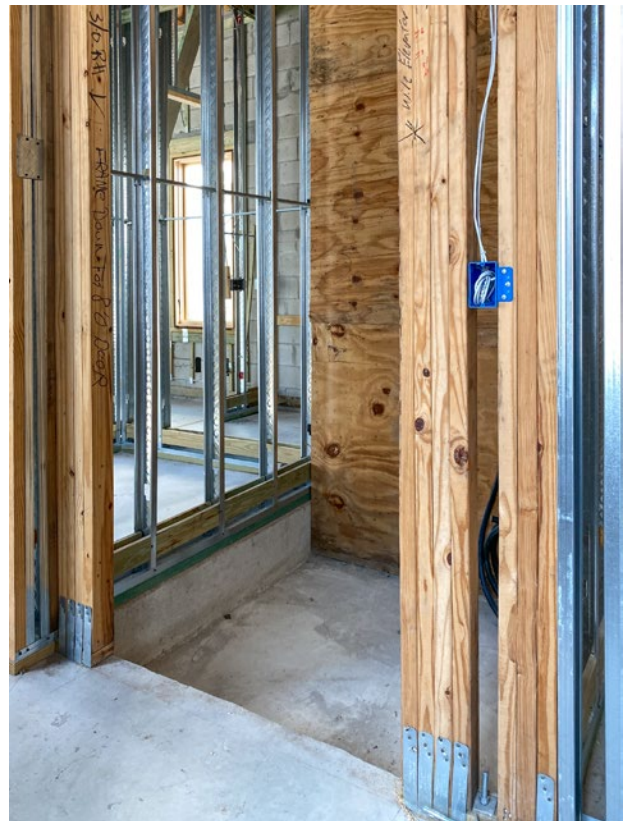
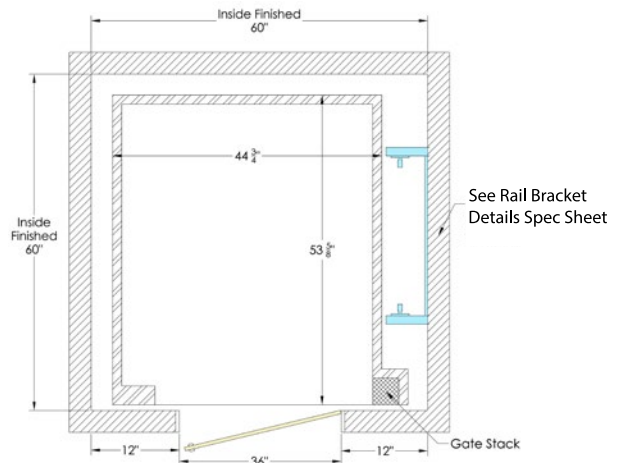
Run 220v 30 amp and 120v 15 amp to the machine room location. (per our Electrical Requirements spec sheets)

PHONE

Run a low voltage line from the modem to the machine room.

DOORS

Install landing doors as per our Hoistway and Door Code spec sheet. The distance between the hoistway face of the hoistway doors and the hoistway edge of the landing sill shall not exceed 19 mm (0.75 in.) for swinging doors.



NOTE: For detailed instructions, refer to each specific spec sheet separately.

PROPRIETARY AND CONFIDENTIAL
The information contained in this drawing is the sole property of Southeast Elevator. Any reproduction in part or as a whole without the written permission of Southeast Elevator is prohibited.



772-461-0030 | seelevator.com